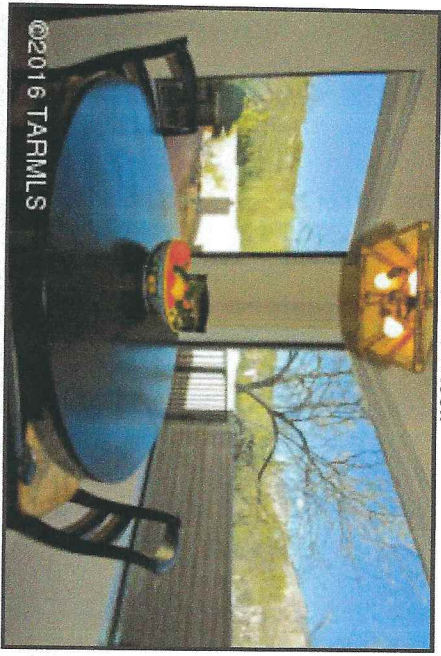


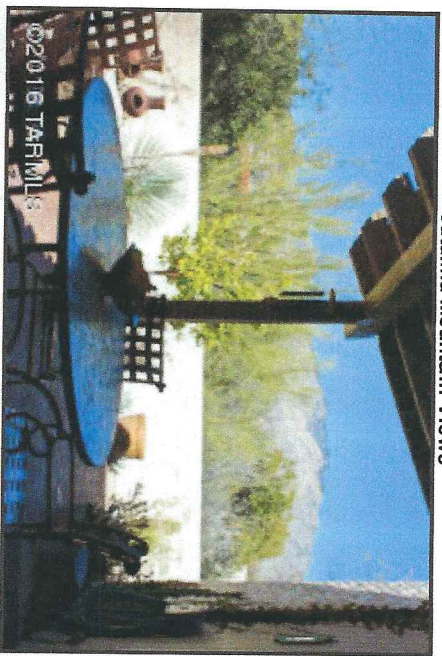
Views from Nook



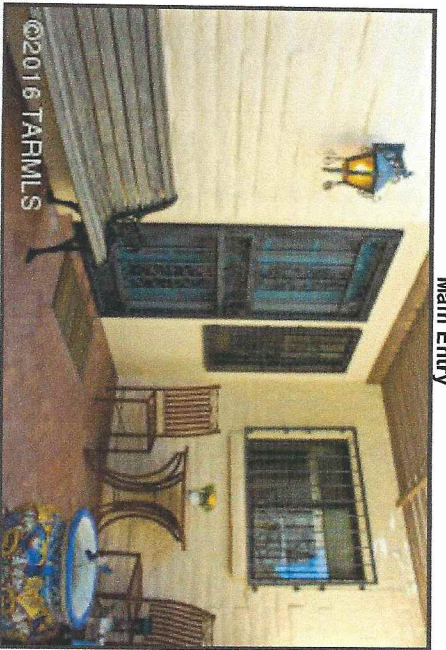
Great place for morning coffee or tea!

flexmls

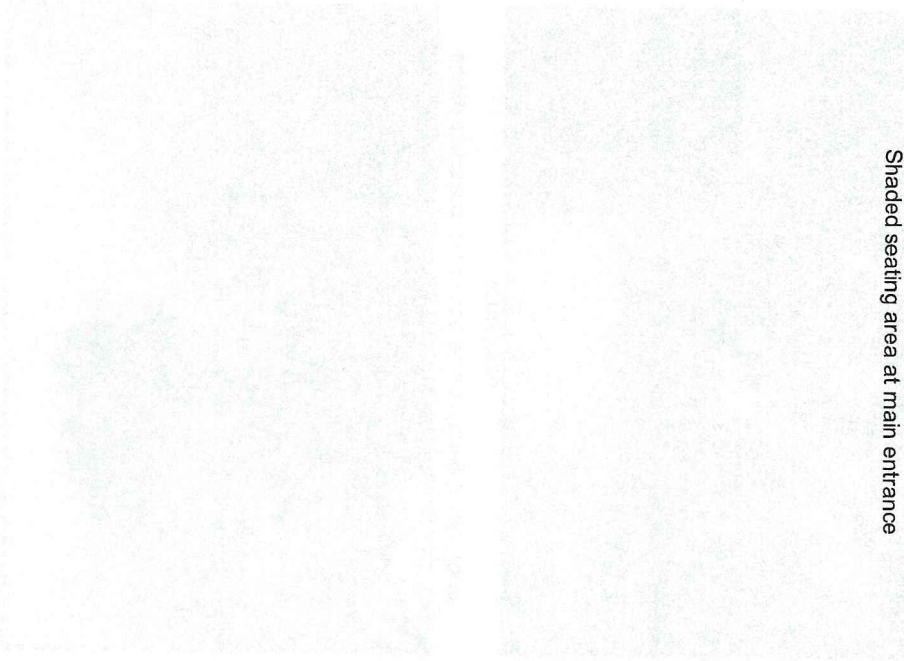
Catalina Mountain Views



Main Entry

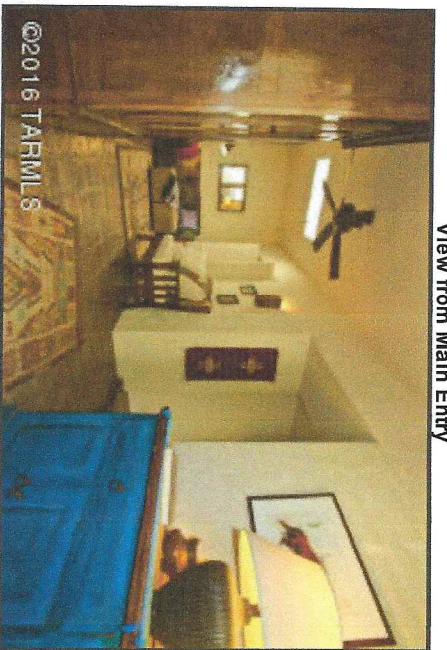


Shaded seating area at main entrance

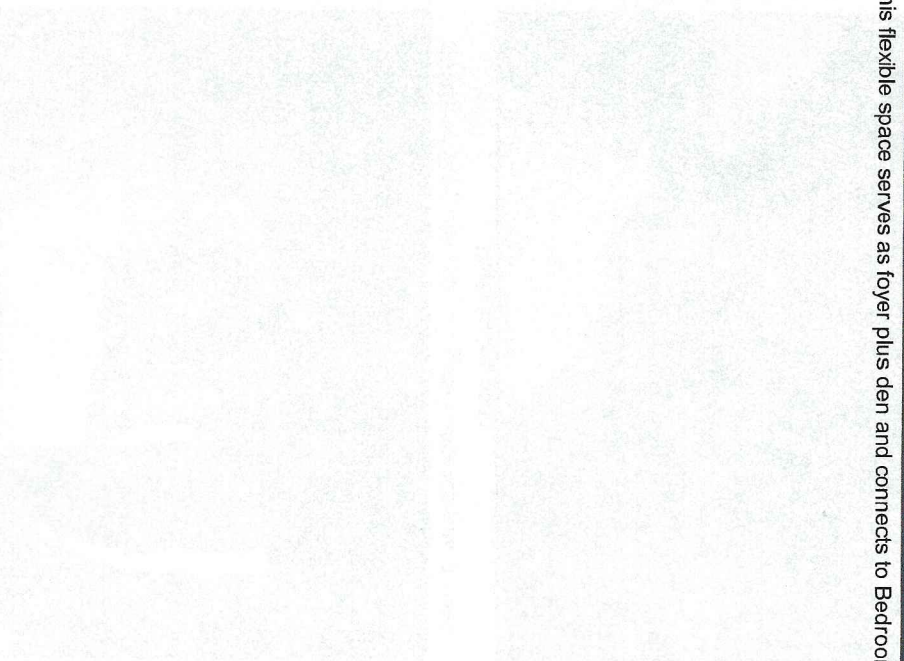


flexm's

View from Main Entry



This flexible space serves as foyer plus den and connects to Bedroom 2.



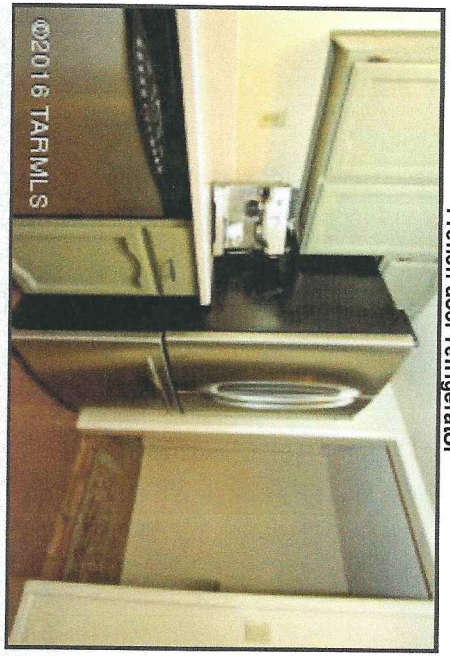


Kitchen view 2

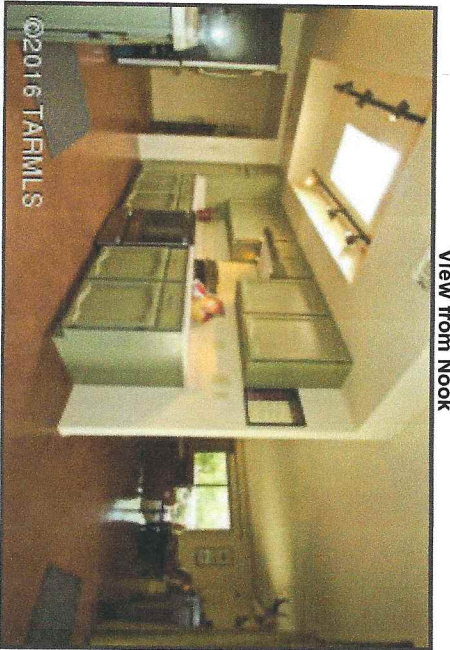


flexmls

French door refrigerator

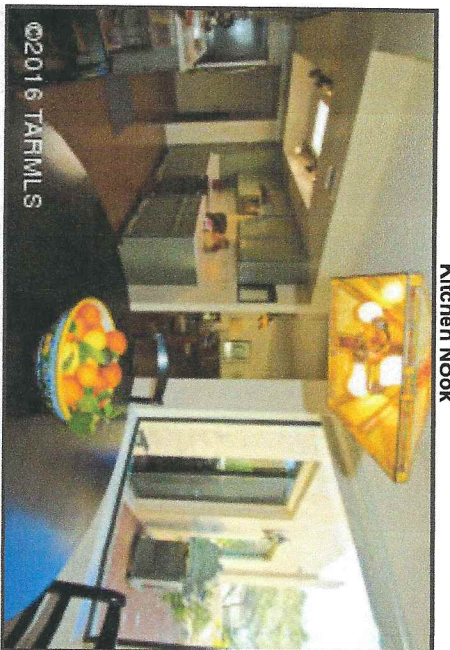


View from Nook



flexmls

Kitchen Nook





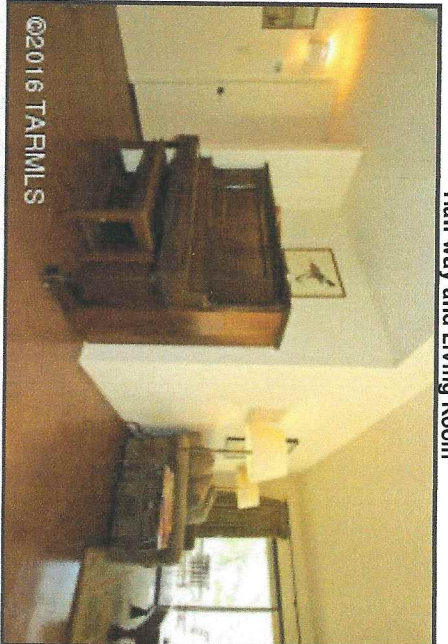
Dining Area View 2



©2016 TARMLS

flexrmls

Hall way and Living Room



©2016 TARMLS

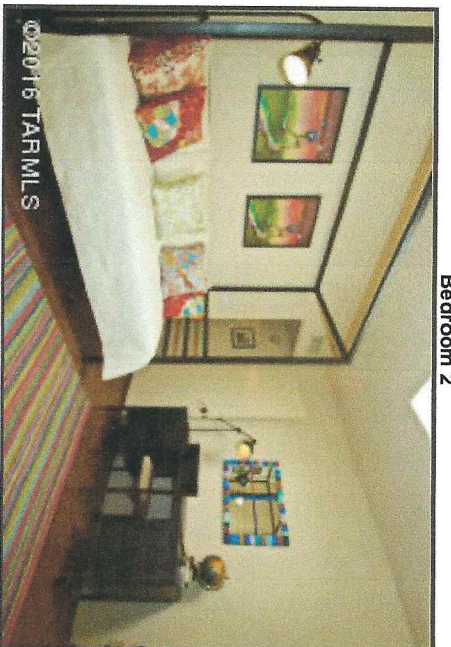
Owner's Bath



Travertine shower, updated fixtures and accessories.

flexmls

Bedroom 2





Back Yard



Easy care landscape with producing orange and lemon trees.

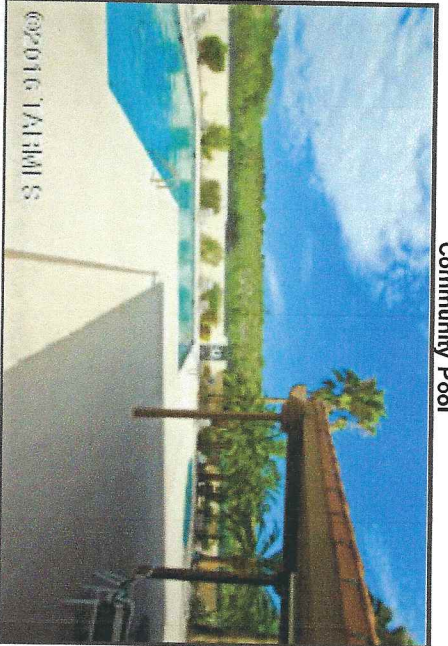
flexmls

Mountain View



From back patio, Catalina Mountains in backdrop

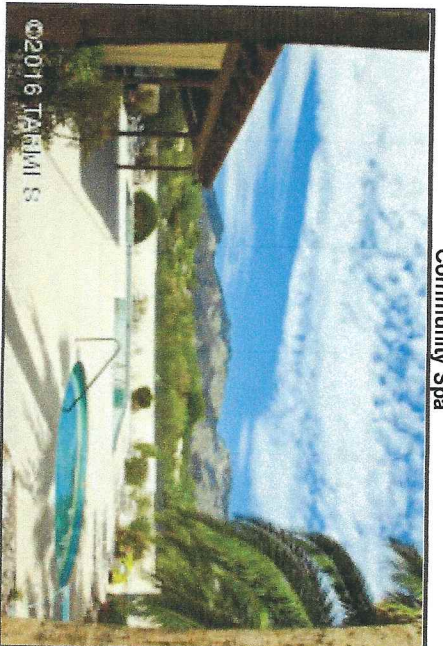
Community Pool



Community pool, spa and ramada are nearby.

flexmls

Community Spa



Beautiful community location with stunning mountain views.